

How to Make a Mini nature reserve

wildlife
watch



1 Choose your site

Choose a safe place to put your window box – somewhere like an old bench or wall at an easy height for inspection.

2 Gather your materials

- window box
- a small log
- yoghurt pot
- some compost
- a rock

3 Fill the box with compost

Always use peat-free compost and save our precious peat bogs.

4 Add a few features

Dig in the yoghurt pot and add the small log and rock.

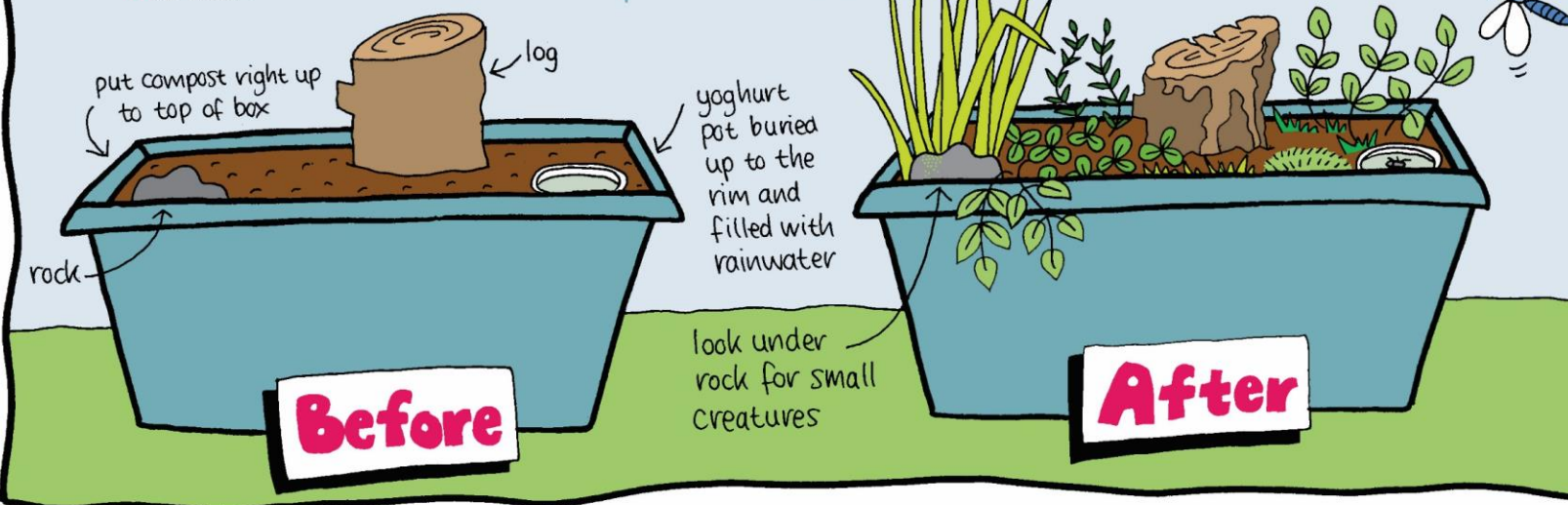
5 Leave!

6 Keep a diary

Record the changes you see. Make notes using guidebooks and take a photo every week.

7 Management

Remove out of control plants or cut them back with scissors.



www.wildlifewatch.org.uk

with thanks to patrick roper for original idea (windowboxwildlife.blogspot.com)