



# How to watch moths

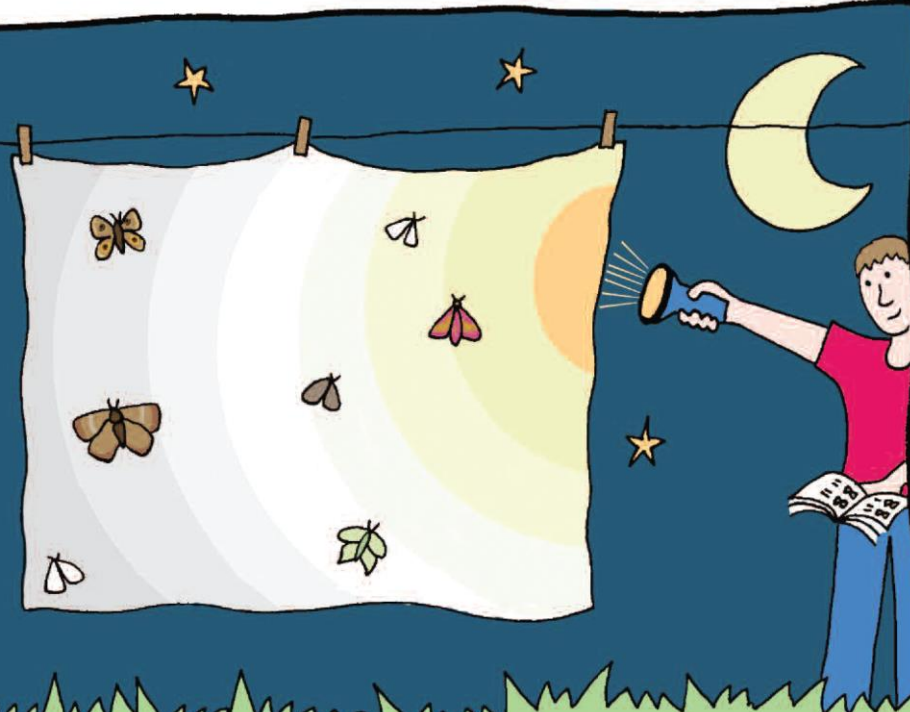
wildlife  
watch



## Light trap

### What you need:

- white sheet
- washing line
- pegs 
- bright lamp or torches



- 1 Peg your sheet on a washing line or over a branch.
- 2 Turn off nearby lights.

- 3 Shine your torch/light onto the sheet... wait patiently.
- 4 ID the moths that gather.

[www.wildlifewatch.org.uk](http://www.wildlifewatch.org.uk)