



Telling the time in the eastern Mendips

Wells Museum

Saturday 28th October 2017

Dr Martin Whiteley

Mendip Rocks! 2017

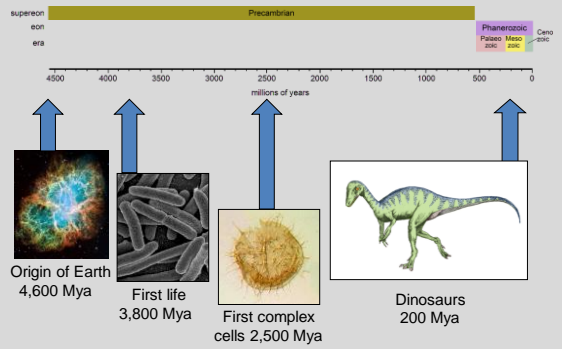
- The following presentation formed part of a series of lectures given at the conclusion of the Mendip Rocks! Festival.
- The material used herein is either provided by the author or has been downloaded as an educational resource from various publically accessible websites.
- For further details about the Festival, please contact:
 Adel Avery
 Tel: 01749 840 156
 Email: adel@nettlebridge.com

Telling the (geological) time

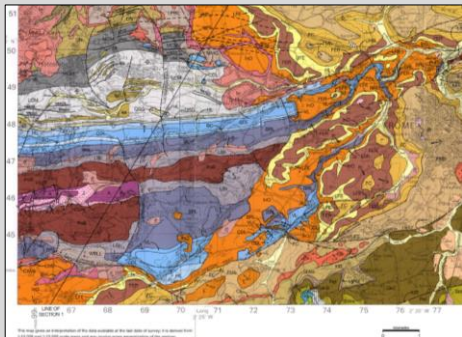


- Philosophical and biblical approaches
- Physical experiments
- Geological and biological theories

Radiometric dating (Mya = Millions of years ago)



Rocks in the eastern Mendips



Silurian sedimentary rocks, 430 Mya



Highly contorted Silurian rocks



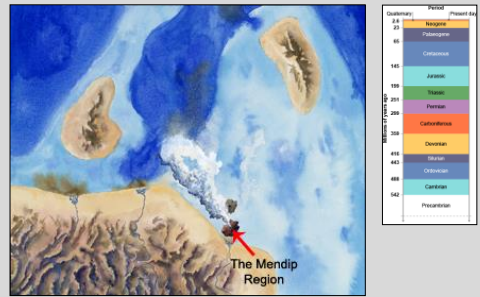
Silurian volcanic rocks



Silurian volcanoclastic rocks



Silurian landscape, 430 Mya



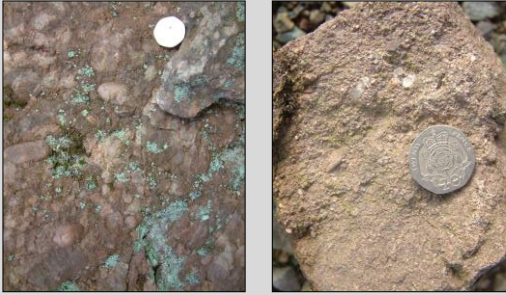
Devonian rocks, 370 Mya



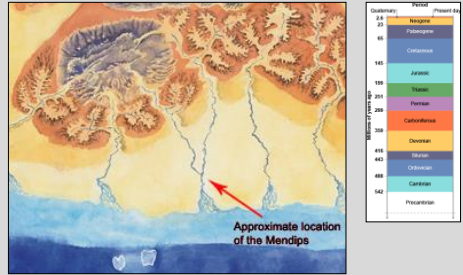
Steeply dipping Devonian rocks



Devonian sedimentary rocks



Devonian landscape, 370 Mya



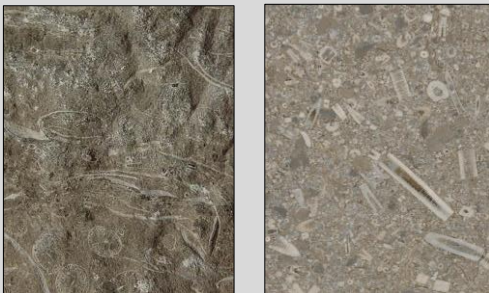
Lower Carboniferous rocks, 350 Mya



Various types of limestone



Bioclastic limestones



Oolitic limestone



Limestone with layers of chert



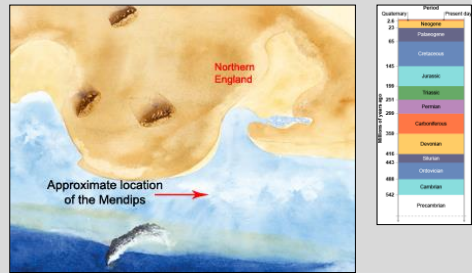
Fossiliferous limestone



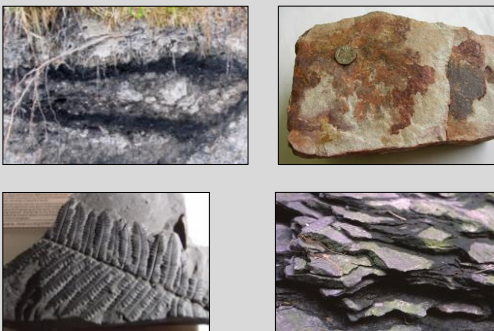
Fossiliferous limestone



Lower Carboniferous landscape, 350 Mya



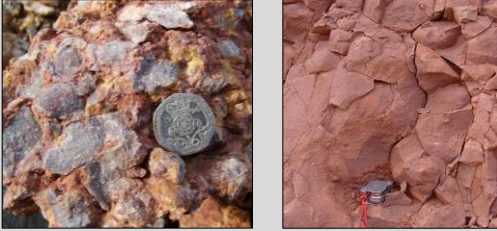
Upper Carboniferous rocks, 320 Mya



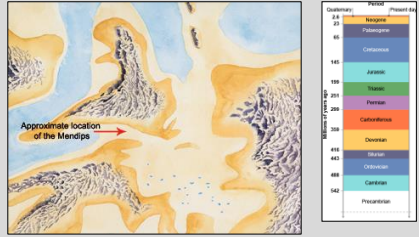
Upper Carboniferous landscape, 320 Mya



Triassic rocks, 240 Mya



Triassic landscape, 240 Mya



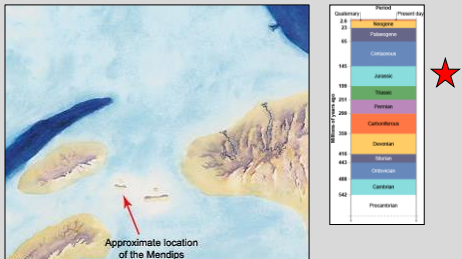
Lower Jurassic rocks, 190 Mya



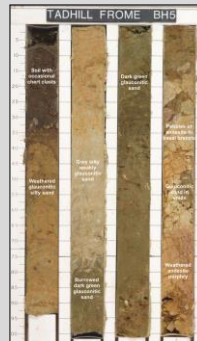
Middle Jurassic limestone, 170 Mya



Jurassic landscape, 180 Mya



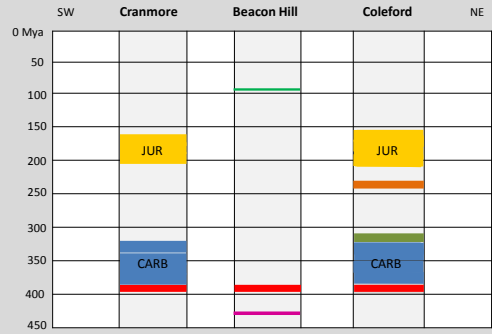
Lower Cretaceous, 100 Mya



Pleistocene, 2.6 Mya



East Mendip rocks in time and space



What's missing?

